

AFRICA FERTILIZER MAP



SPONSORED BY:



www.maden.com.sa

KEY

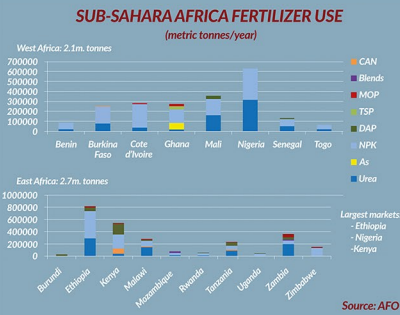
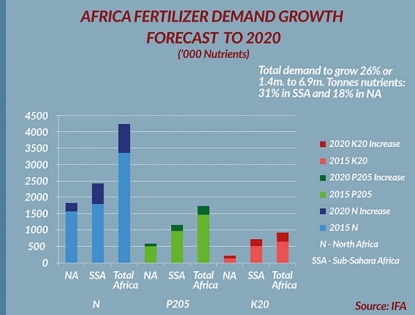
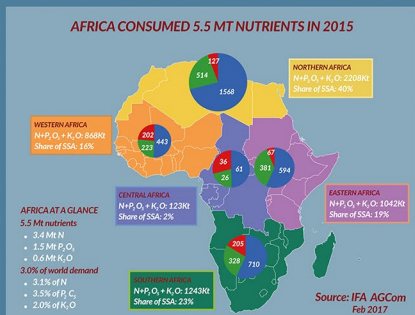
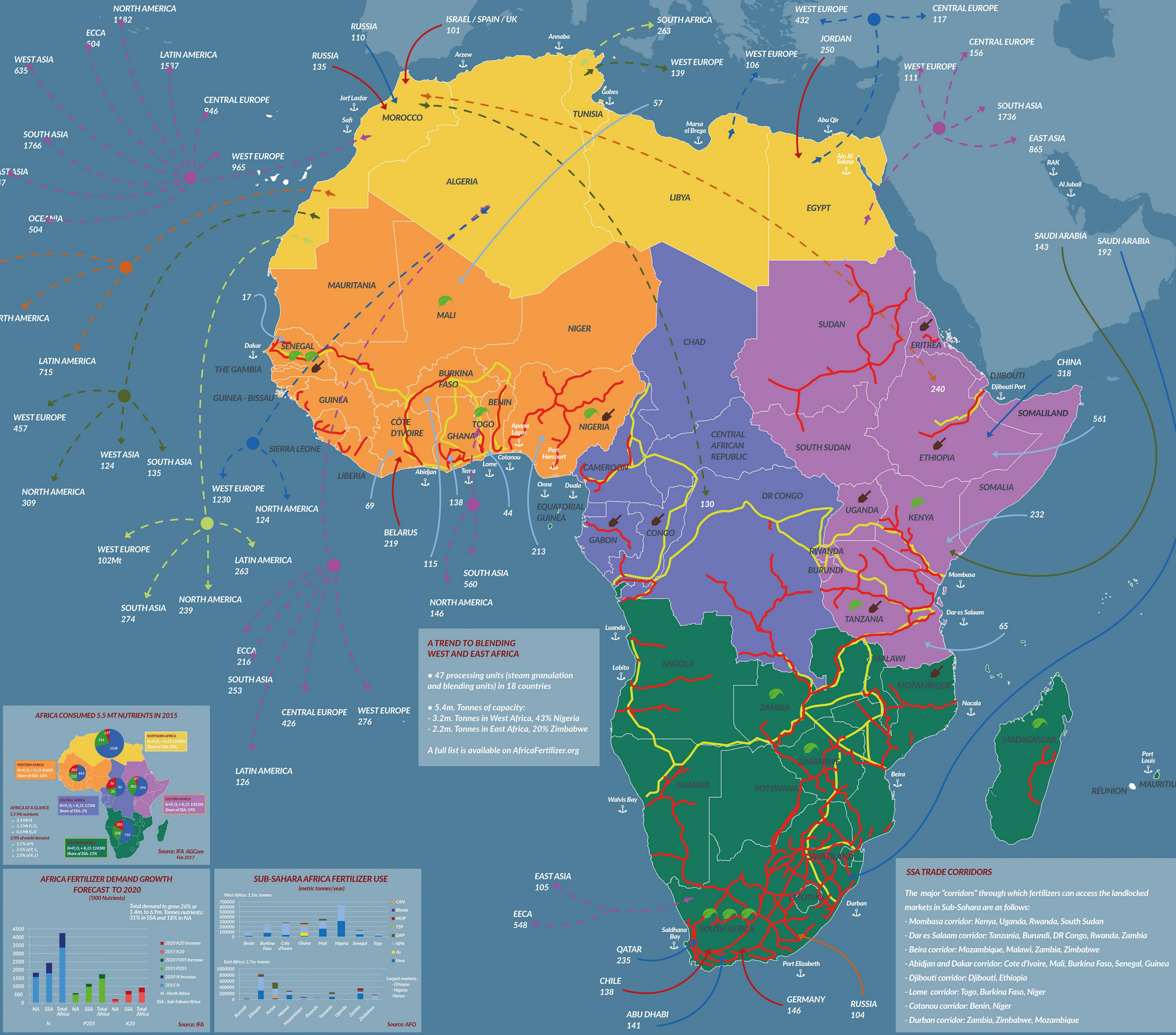
Urea, MOP, MAP, DAP, TSP, Phosphate Rock '000 metric tonnes
Source: IFA 2015 data Cut off tonnage for IFA trade flows is 100,000 tonnes

NPKs trade flows include NPK, NP, NK and PK compounds
Source: IFDC/AFAP 2015 data

Sub-Sahara African Plants and Projects are in '000 tonnes/year capacity

- UREA
- NPK
- DAP
- MAP
- TSP
- MOP
- PHOSPHATE ROCK
- NORTHERN AFRICA
- WESTERN AFRICA
- CENTRAL AFRICA
- EASTERN AFRICA
- SOUTHERN AFRICA
- IMPORT PORTS
- EXISTING PLANTS
- PROJECTS
- MAIN ROADS AND CORRIDORS
- MAJOR RAIL LINES
- EXPORTS
- IMPORTS

- EXISTING PLANTS**
- SENEGAL**
ICS - 250 Phosphate Rock/PA/DAP/SSP/TSP
SERPM - 25 Phosphate Rock
 - TOGO**
SNPT - 300 Phosphate Rock
 - NIGERIA**
Notore - 500 Urea
Indorama - 1,400 Urea
 - KENYA**
Kel Chemicals - 200 SSP
 - TANZANIA**
Minjingu Mine - 100 Phosphate Rock/ 30 NPKs
 - ZAMBIA**
Nitrogen Chemicals - 252 NPKs/64 AN
 - ZIMBABWE**
ZimPhos - 150 Phosphate Rock/45 TSP/200 SSP
Sable Chemical - 240 AN
 - MADAGASCAR**
IRM - 180 AS
 - MALI**
Toguna Agro - 300 Phosphate Rock
 - SOUTH AFRICA**
Omnia - 600 CAN/NPKs
Foskor - 400 MAP, 640 PA, 2,200 SA
Sasol - 600 Ammonia, 330 AN, 100 AS
- PROJECTS**
- SENEGAL**
Indorama - 800 and 1,500 Phosphates
 - NIGERIA**
Dangote - 2,800 Urea
 - GABON**
Gabon govt/Olam - 1,400 Urea
 - CONGO**
Elemental Minerals - 2,000 potash
 - ERITREA**
Danakil Potash - 800 SOP
 - ETHIOPIA**
Yara - 600 SOP
 - TANZANIA**
TPDC/Ferrosal/Topsoe/Fauji - 1,300 Nitrogen
 - MOZAMBIQUE**
Yara - 1,300 Urea
 - UGANDA**
Sukulu mines - 300 SSP/TSP



A TREND TO BLENDING WEST AND EAST AFRICA

- 47 processing units (steam granulation and blending units) in 18 countries
- 5.4m. Tonnes of capacity:
 - 3.2m. Tonnes in West Africa, 43% Nigeria
 - 2.2m. Tonnes in East Africa, 20% Zimbabwe

A full list is available on AfricaFertilizer.org

SSA TRADE CORRIDORS

The major "corridors" through which fertilizers can access the landlocked markets in Sub-Sahara are as follows:

- Mombasa corridor: Kenya, Uganda, Rwanda, South Sudan
- Dar es Salaam corridor: Tanzania, Burundi, DR Congo, Rwanda, Zambia
- Beira corridor: Mozambique, Malawi, Zambia, Zimbabwe
- Abidjan and Dakar corridor: Cote d'Ivoire, Mali, Burkina Faso, Senegal, Guinea
- Djibouti corridor: Djibouti, Ethiopia
- Lome corridor: Togo, Burkina Faso, Niger
- Cotonou corridor: Benin, Niger
- Durban corridor: Zambia, Zimbabwe, Mozambique